



---

## QUE SYSTEM USER MANUAL

A fully immersive gym lighting system designed for the fitness industry.

***Lighting Made Simple***

## **LED Snaps QUE Bar User Manual Rev. A**

©2025 LED Snaps™. The information in this document is subject to change without notice.

LED Snaps™ and all affiliated companies disclaim liability for any injury, damage, direct or indirect loss, consequential or economic loss, or any other loss occasioned using, inability to use, or reliance on the information contained in this manual. The LED Snaps™ logo, the LED Snaps™ name, and all other trademarks in this document pertaining to LED Snaps™ services or LED Snaps™ products are trademarks owned or licensed by LED Snaps™, its affiliates, and subsidiaries.

English Edition



## Contents

Safety information.....	2
Overview & parts identification.....	3
Preparing for installation.....	4
Installing the bracket system.....	5
End caps.....	7
Connecting the power.....	8
Wall Controller Overview .....	9
Linking/Unlinking Fixtures .....	10
Troubleshooting.....	12
Connection diagram .....	13
Support.....	14
Product specifications .....	15

## Safety Information



### Warning!

Read the following safety precautions carefully before unpacking, installing, powering, or operating the device.



LEDsnaps™ luminaires are intended for professional use only.

This product must be installed by a Level 2 Electrician familiar with breaker installation and the hazards involved.

### **DANGER! Risk of electric shock. Do not open the device.**

- Always power off/unplug the fixture before removing covers or dismantling the product.
- Ensure that the mains power is off when wiring the device to the AC mains supply.
- Ensure that the device is electrically connected to earth (ground).
- Do not apply power if the device or mains cable is in any way damaged.
- Do not immerse the fixture in water or liquid.

### **WARNING! Take measures to prevent burns and fire.**

- Install in a location that prevents accidental contact with the device.
- Install only in a well-ventilated space.
- Install only in accordance with applicable building codes.
- Do not paint, cover, or modify the device, and do not filter or mask the light.
- Keep all flammable materials well away from the device.
- Allow the device to cool for 15 minutes after operation before touching it.

### **WARNING! Take measures to prevent personal injury.**

- Take precautions when working at height to prevent injury.
- Ensure cables are securely fastened/held to avoid the weight of the cable pulling on the QUE bars.

## Overview

The QUE Bar System is a high-performance addition to the LEDSnaps™ product range, engineered for reliability and designed to enhance professional environments.

This LED lighting system provides static coloured illumination, delivering bold and consistent light output to enhance weight areas, studio spaces, and functional training zones. With no moving effects, the QUE Bar creates a clean and controlled lighting environment that promotes focus, energy, and visual impact.

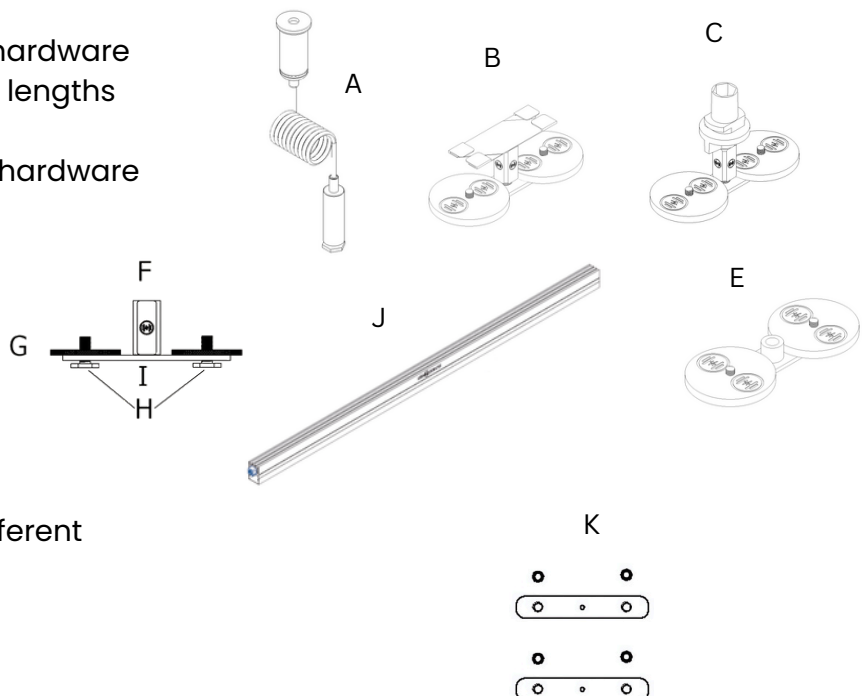
The LEDSnaps™ QUE Bar is a static RGBWW LED lighting bar.

The QUE Bar features built-in 2.4G RF and Zigbee 3.0 protocols, enabling wireless control of the lighting system.

The LEDSnaps™ Wall Controller supports up to four (4) zones and can control a maximum of eighty (80) fixtures within a range of 25 meters.

## Parts Identification and Terminology

- A: Infrastructure suspension hardware  
– standard 1m cable (custom lengths upon request)
- B: Existing suspended ceiling hardware
- C: Track adapter hardware
- D: Flat ceiling hardware
- E: Surface mount hardware
- F: Turnbuckle
- G: Thumbwheel
- H: Turnbuckle screws
- I: Turnbuckle plate
- J: QUE Bar 1200
- K: Splicing kit (available in different lengths if required)



## **Preparing for Installation**

### **Unpacking**

Carefully unpack the lighting system to verify that all components are present and that no damage has occurred during transit. The LEDSnaps™ system is supplied with the following items (as specified by customer requirements):

- 1 × Wall-mount Control Panel
- 2 × Mounting hardware kits per LEDSnaps™ QUE Bar 1200
- Starter cables
- End-of-run end caps for sealing the socket on the final light bar in a run
- Cable end caps for use wherever a cable is connected to a QUE Bar 1200
- LEDSnaps™ QUE Bar 1200 units
- Link cables for bridging gaps or obstacles between fixtures

### **Location**

- Ensure that the ceiling surfaces where the LEDSnaps™ QUE Bar 1200 will be installed are clean, dry, and free from contaminants.
- Confirm that the installation location prevents any accidental contact with people, doors, or moving equipment.

### **Transportation**

Use the supplied packaging or a suitable flight case for transportation and storage of the fixtures.

If LEDSnaps™ branded soft carry cases are required, please contact LEDSnaps™ directly.

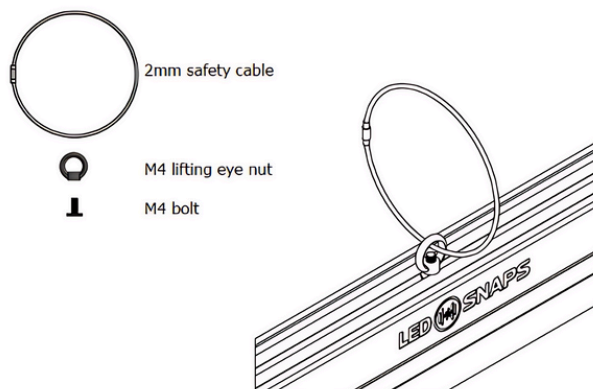
Never carry or lift the fixtures by their cables or wires.

## Installing the bracket system

### Infrastructure Suspension Hardware

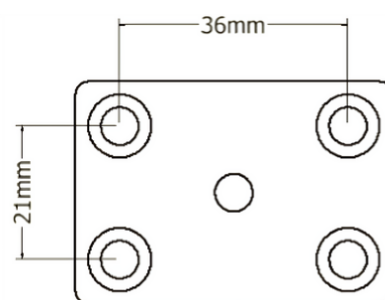
To install the suspended ceiling bracket, start by simply clipping the scissor clip to the ceiling grid work between the ceiling tiles, spacing them 600mm apart for even weight distribution of the QUE Bars.

You will also be supplied with one safety cable kit per QUE Bar. These are to be fitted in the middle of each QUE Bar with the cable looping over the ceiling grid. The ceiling tiles should fall comfortably with the cable fitting between the tile and ceiling grid.



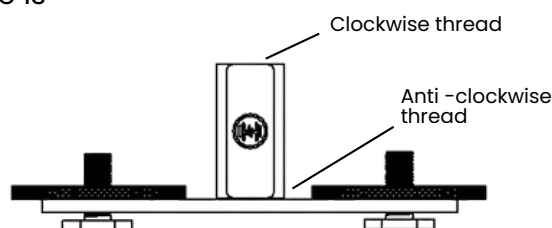
### Flat Ceiling Hardware

To install the flat ceiling hardware, start by marking on your ceiling where the brackets will be fixed. These should be spaced 600mm apart for even weight distribution of the LEDSnaps™ QUE Bars. Ensure the installation is perfectly linear, or the QUE Bars will not fit together. Fix the low ceiling plate to the ceiling using the supplied M6 screws and wall plugs. If needed, an installation template is included on page 17.



### Track Adapter Hardware

To install the track adapter hardware, simply insert and twist the track light fitting into your existing track light system.

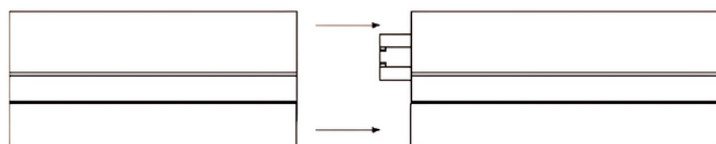


LEDSnaps™ will not draw any power from your track light so your current power configurations need not change. This is an attachment fitting only. The threaded rod and nut will be pre-fitted to ensure a good fit inside the track light fitting. Simply drop the threaded rod into the fitting and screw it onto the turnbuckle.

### Existing Suspended Ceiling Hardware

To ensure your QUE Bar system is installed in a straight line, we recommend the use of a standard laser alignment tool from your local hardware store. To install the existing suspended ceiling hardware, first mark on your ceiling the line your lighting is to follow. Your first fixing point should be 300mm in from the start of your first QUE Bar, and every 600mm throughout the installation. This will ensure a centred fitting and equal force on each cable.

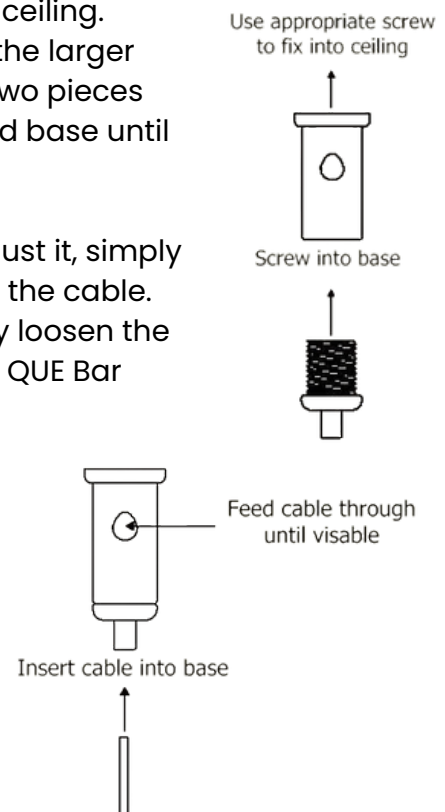
Once bars are level, simply slide together.



The silver hardware made of 2 pieces will attach to your ceiling. Unscrew these and use an appropriate screw to attach the larger piece to the ceiling. Once secured into place screw the two pieces back together. Now you can insert the cable into the fixed base until you can see it coming out of the hole.

The cable will lock into place, but should you need to adjust it, simply push the point where the cable enters, and it will release the cable. The black hardware is made of 3 pieces. This time simply loosen the hex bolt enough to slide onto the back of the LEDSnaps™ QUE Bar and move into place and tighten.

Then take the other end of the cable and insert it into the hole end of the black piece until you reach your desired length of cable. This will lock into place, but can be adjusted as with the ceiling end, by pushing where the cable enters. Once all your LEDSnaps™ QUE Bars are installed and you're happy with the position and height, you can cut the excess cable.



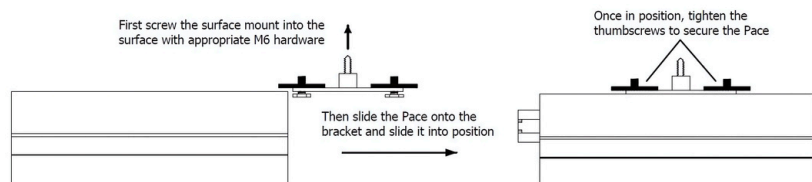
### Suspended Ceiling Installation

Suspended ceiling brackets have a scissor clip fitted to the thumbwheel bracket at the factory and are supplied in pairs with a safety cable. Slide the first bracket that has the scissor clips onto the QUE Bar, followed by the safety wire (this sits in the centre) and then the second bracket.

Take a LEDSnaps™ QUE Bar in both hands and line up the channel on the back with the thumbscrew bolts you've left very loose and slide the QUE Bar into position. Once in place, use one hand to tighten the thumbscrews from beneath the QUE Bar to lock it in place. Do this for both brackets before moving on to the next QUE Bar. After the first QUE Bar, you will need to connect the following unit to the preceding using the supplied splicing kit. This ensures that there is no movement between the lighting units.

### Surface Mount Hardware

To install the flush mounts first mark on your wall or ceiling the line your lighting is to follow.



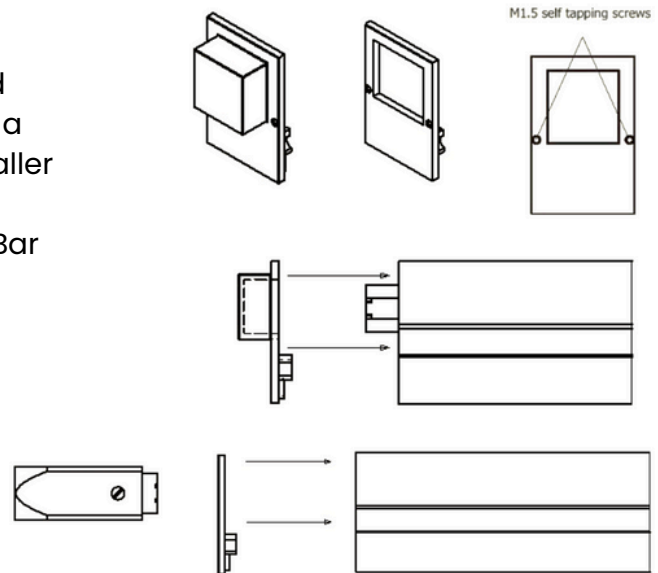
Your first fixing point should be 300mm in from the start of your first LEDSnaps™ QUE Bar, and every 600mm throughout the installation. This will ensure a centred fitting and equal force on each cable.

When installing the second QUE Bar onwards in any line, it will need to be pushed into place slightly ahead of the previous, then slide back onto the previous QUE Barr to mate the connectors.



## End Caps

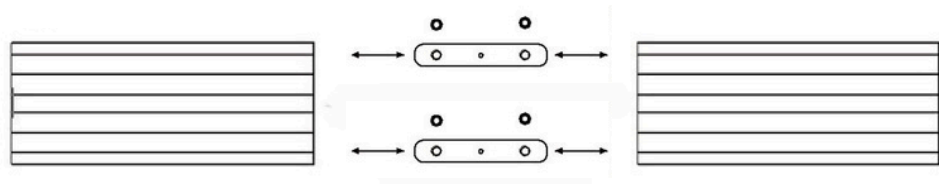
You will be supplied with two types of end caps: a larger cap for the final QUE Bar in a run, to cover the protruding socket: a smaller open-end cap to surround a start or link cable, at the beginning of the line of QUE Bar



## Locking the LEDSnaps™ QUE Bar together

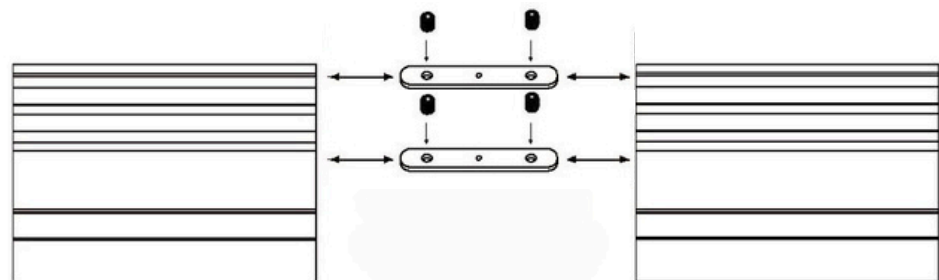
When installing subsequent LEDSnaps™ QUE Bars you will need to lock them together using the splicing kit, which simply requires the tightening of four grub screws with the included Allen key. The splicing bars are to be fitted on the top of each QUE Bar.

Use the included 2mm Allen key to tighten the grub screws



Slide the splicing kits into the two outer channels.

Use the holes to locate the correct positions.



**NOTE: You must check that all your brackets and splicing kits are tightened and the LEDSnaps™ QUE Bars do not come apart or slide on the brackets.**

**DO NOT TURN ON THE POWER UNTIL THIS CHECK HAS BEEN COMPLETED**

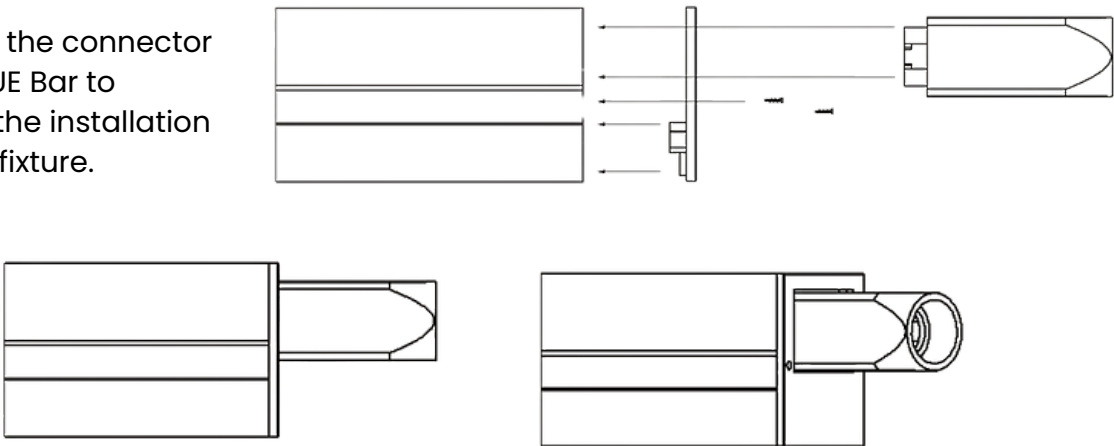
### Important: Risk of Electric Shock

**Always install the end cap on the final LEDSnaps™ QUE Bar in each run to cover the output socket. Failure to do so may result in electric shock if a foreign object comes into contact with the exposed socket.**

Connecting power to your QUE Bars

The starter cable is supplied with a bare end to be wired into a power source by a qualified electrician. The opposite end features a connector that plugs into the QUE Bar to supply power to the fixture. Additional fixtures in the chain can draw power either directly from the previous QUE Bar or via a link cable.

Fully insert the connector into the QUE Bar to complete the installation of the first fixture.



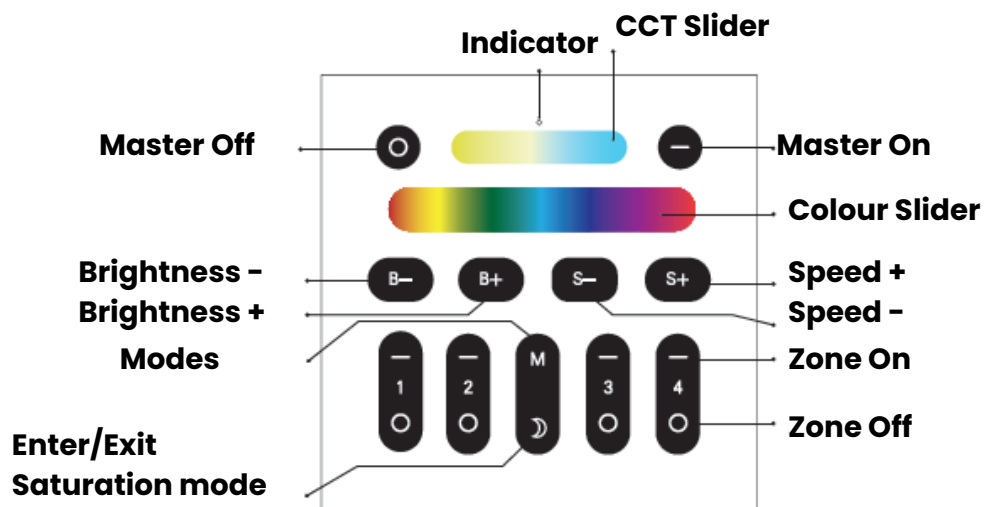
The LEDSnaps™ QUE Bar operates on a 208–240 V, 50/60 Hz AC mains power supply. Connect the QUE Bar to the AC mains by wiring the mains cable directly to a Type C MCB capable of handling the total load of connected PACE units. Refer to the summary table below for detailed specifications

<u>Up to 10 Que Bar</u>	<u>10A Type C MCB</u>
<u>10 to 20 QUE Bar</u>	<u>16A Type C MCB</u>
<u>20 + QUE Bar</u>	<u>32A Type C MCB</u>

	Colour
Live	Brown
Neutral	Blue
Earth	Green and Yellow Striped

**NOTE: Your installer will need to supply and install an appropriate cable length and rating to connect the QUE Bar to your main breaker.**

## LEDSnaps™ QUE Bar Controller



Press the Master Off button to turn off all lights.  
Press and hold the button to activate Night Light mode for all lights.



Press the Master On button to turn on all lights.  
Press and hold the button to set all lights to white.



Touch the CCT Slider to adjust the light colour temperature from 2700 K to 10000 K.



Touch the Colour Slider to select your desired colour.



Touch the button to adjust brightness up and down



Touch the S- button to decrease the speed of the Dynamic Mode.



Touch the S+ button to increase the speed of the Dynamic Mode.



Touch the Zone Off button to turn off all lights in the selected zone.  
Press and hold the button to activate Night Light mode for that zone.



Touch the Zone On button to turn on all lights in the selected zone.  
Press and hold the button to set all lights in the zone to white.



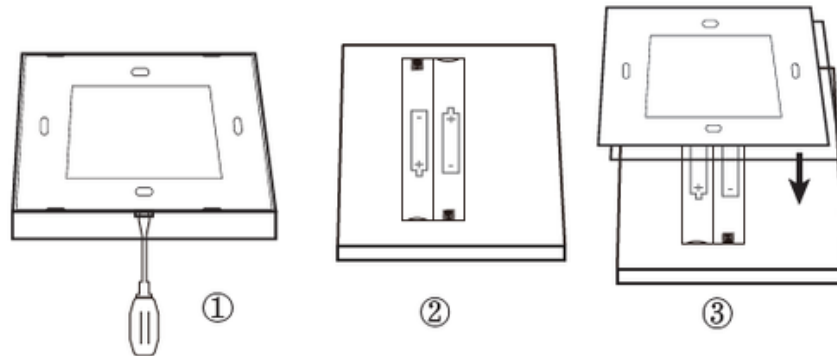
Touch the M button to enter Colour Changing Mode. There are nine (9) selectable modes available.




Touch the Moon button to enter saturation mode. Adjust the saturation level by pressing the S+ or S- buttons.


## Battery Installation

Remove the back panel to access the battery compartment. Install two (2) AAA batteries, ensuring that the negative poles of each battery are correctly aligned. Replace the battery cover and secure it properly.



## Linking and Unlinking LEDSnaps™ QUE Bars

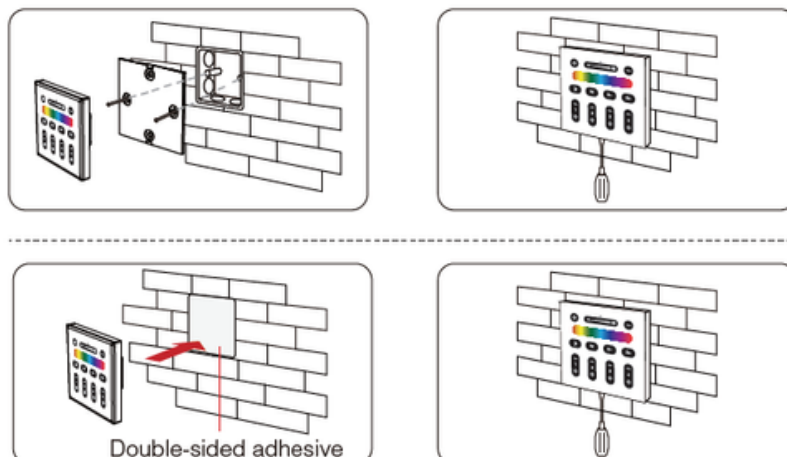
**Link:** Power down the LEDSnaps™ QUE Bar and power back on. Within 3 seconds touch any of the zone  button to assign the QUE Bar to that zone. You will see the light blink 3 times.

**Unlink:** Power down the LEDSnaps™ QUE Bar and power back on. Within 3 seconds touch the linked zone  button 5 times quickly. The unlink is done when you see the light blink 9 times.

**Reset the QUE Bar:** Power down the LEDSnaps™ QUE Bar and power back on and off 5 times. On the 5<sup>th</sup> time keep power to the QUE Bar and you will see it flash 3 times to indicate it has been reset.

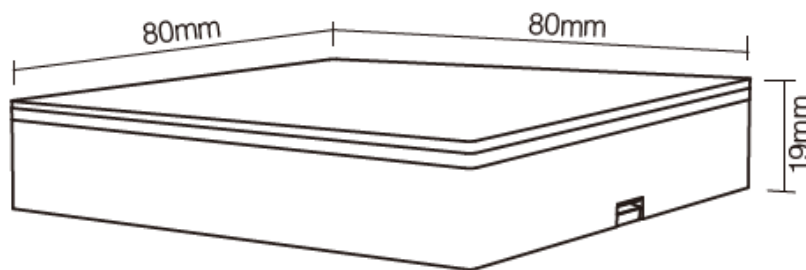
## Installation

The LEDSnaps™ Wall Remote can be installed either by securing it to a standard single gang back box or by mounting it directly onto the wall.



## LEDSnaps™ Wall Controller Specifications

- Operating Temperature: -20 to 60 °C
- Input Voltage: 3 V (2 × AAA batteries)
- Radio Frequency: 2400–2483.3 MHz
- Modulation Method: GFSK
- Transmitting Power: 6 dBm
- Control Distance: 25 m
- Maximum Fixtures: 80
- Dimensions: 80 × 80 × 19 mm



## Zigbee Operation

The LEDSnaps™ QUE Bar can be integrated into existing Zigbee networks.

To operate the LEDSnaps™ QUE Bar on a new Zigbee network, a compatible Zigbee hub must be purchased.

Setup Instructions:

1. Ensure the QUE Bar is not already paired with another Zigbee network.
2. Using the Zigbee hub and its companion app, add the QUE Bar device to the network according to the hub manufacturer's instructions.

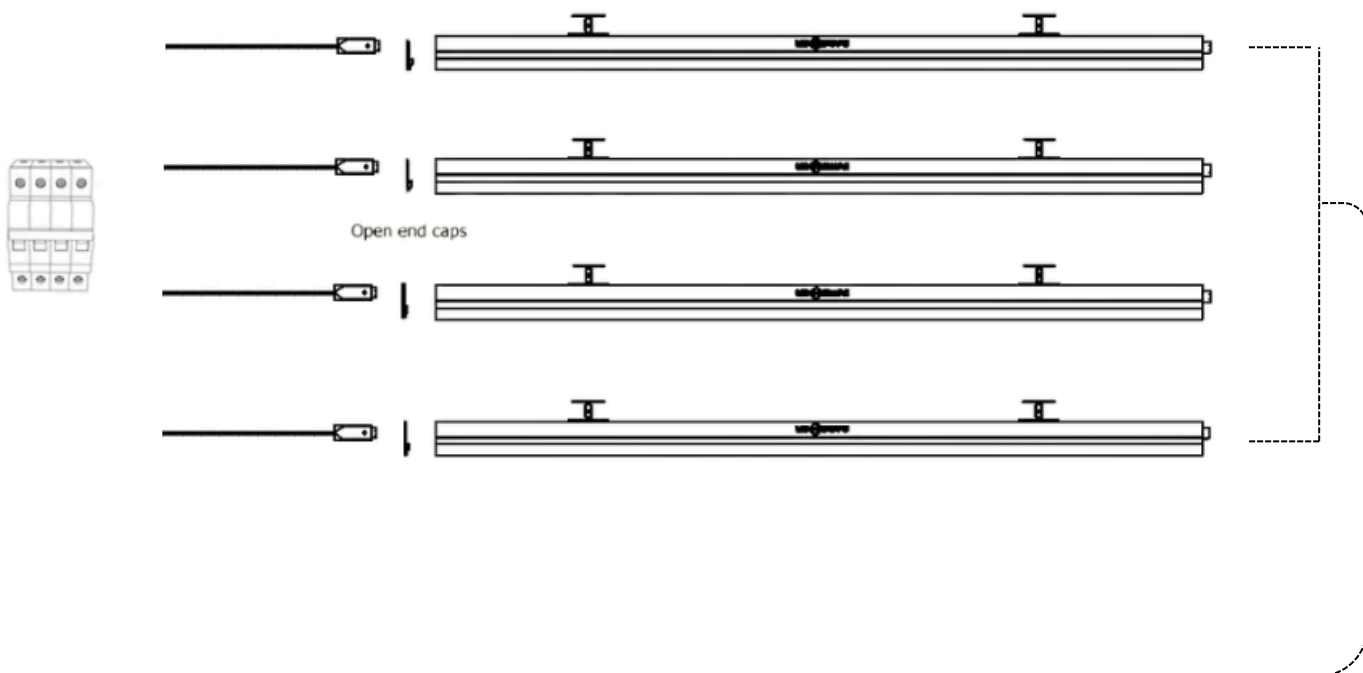
## Troubleshooting

Should you encounter any sort of problem with your LEDSnaps™ lighting system refer to the troubleshooting guide below and then, if necessary, contact us on [info@ledsnaps.com](mailto:info@ledsnaps.com) , or +44 (0) 1233 423 360.

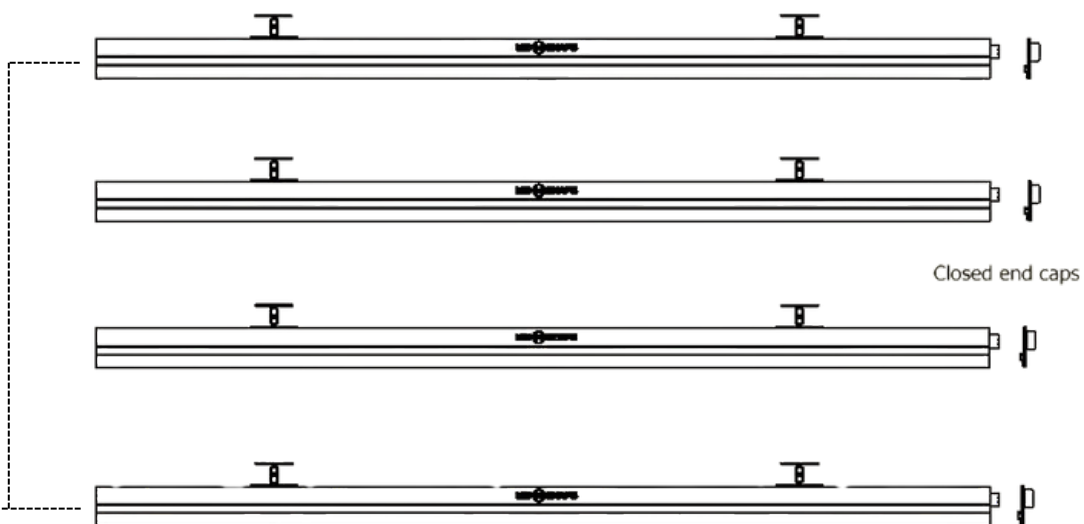
Problem	Potential cause(s)	Remedies
No Power to QUE Bar	Start cable not wired into MCB correctly	Check Start cable wiring into MCB
Not all QUE Bars are lighting up.	Poor connection between QUE Bars.	Disconnect the power and check all connections between each QUE Bar. Then ensure all brackets and splicing kits are secure.
Not all QUE Bars are responding to the controller	QUE Bar may not be linked to controller correctly	Relink QUE Bar to the wall remote
QUE Bar will not link to LEDSnaps controller	QUE Bar may need resetting	QUE Bar can be reset by power cycling the QUE Bar 5 times and waiting for it to flash 3 times
QUE Bar is not responding to correct zone	QUE Bar may be linked to wrong zone on the controller	Unlink QUE Bar and relink to correct zone
MCB is tripping when turning on the power to the QUE Bar	Incorrect MCB installed	Refer to MCB specification on Page 10 and install correct MCB
	Inrush current from QUE Bars is too high on power on	Install an Inrush current limiter to the MCBs to help with inrush control.
Cannot find QUE Bar on Zigbee Network	QUE Bar already paired to another Zigbee Network	Reset QUE Bar internally by power cycling fixture 5 times until it flashes green 3 times.

## Connection diagram

From the MCB to the first LEDSnaps™ QUE Bar.



At the end of each LEDSnaps QUE Bar linear run.



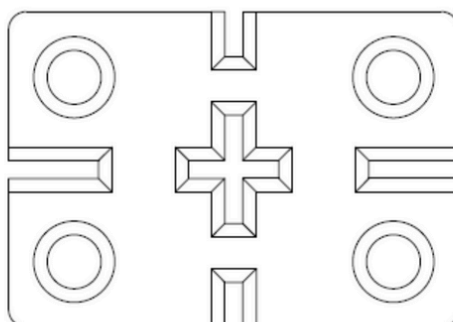
## Support

Should you require any support or have any queries, please contact one of our representatives using the contact information below.

<b>Email</b>	-	info@ledsnaps.com
<b>Phone</b>	-	+44 (0) 1223 423 360
<b>Headquarters</b>	-	Units 21-24 Creative Enterprise Quarter Javelin Way Ashford, Kent TN24 8FN



To aid with the installation of the Flat Ceiling Hardware, below is a 1:1 installation template. This can be cut out and used to follow an installation line and mark the hole location for your installation hardware.





## **Product Specifications**

### QUE Bar 1200

Input Voltage – 230 Volt  $\pm 10\%$ , 50 Hz

Input Current – 0.3 Amps

Operation Voltage – 12V DC

Operation Current –  $\leq 1.5$  Amps

Over current protection

Over Voltage protection

Over Temperature protection

Built-in Meanwell power supply

72 RGBWW LED per QUE Bar 1200

Net dimensions – 1212 x 53 x 35 mm

Net weight – 1.2kg

### LED snaps™ Wall Remote

Max Range of Wall remote – 25m

Max amount of fixture per remote – 80 Que bars

Net dimensions – 80 x 80 x 19mm

Working temperature: -20 to 60°C

Input Voltage: 3V (2\*AAA Battery)

Radio Frequency : 2400-2483.3 MHz

Modulation Method: GFSK

Transmitting power: 6 dBm

Control Distance: 25 m

Max fixtures: 80